

Technical Data

Material:

Pin(outer sleeve): Brass, machined CuZn38Pb2

Plating(outer sleeve):

Tin Plated: 2µm/80µm Ni, 5µm/200µm Sn

Gold Plated: 2µm/80µm Ni, 0.8µm gold

Plating(Contact): 2µm/80µm Ni, gold or Tin plated

Insulator: PPS UL94V-0

Clip(Contact 6 Finger): Beryllium copper, heat treated

Electrical:

Current rating: 1Amps/contact max.

Contact resistance: ≤4mΩ/contact

Insulation resistance: ≥1000MΩ at V=100V

Operating voltage: 60VAC/DC

Mechanical:

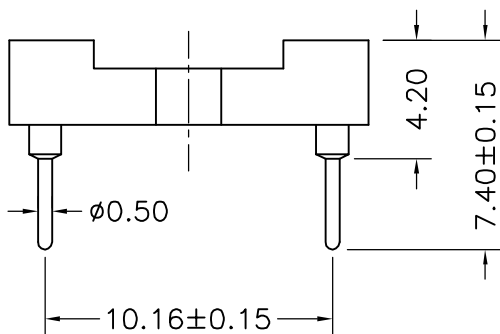
Average Insertion force with steel pin of ø0.432: <90g

Average withdrawal force with steel pin of ø0.432: >25g

Mechanical life cycle: min 200

Operating temperature: -40°C to +105°C

Soldering temperature: +255°C



| Serial number | No. of Positions | PART NO | A | B |
|---------------|------------------|---------------------|-------|--------|
| 1 | 24 | QZTB4-I124XXXX0740B | 21.80 | 19.558 |
| 2 | 28 | QZTB4-I128XXXX0740B | 25.20 | 23.114 |
| 3 | 30 | QZTB4-I130XXXX0740B | 27.00 | 24.892 |
| 4 | 32 | QZTB4-I132XXXX0740B | 28.80 | 26.67 |
| 6 | 48 | QZTB4-I148XXXX0740B | 43.10 | 40.894 |

Qztconn
启之泰

| | | | | | | | | |
|--|---|---|----------------------------------|---|--|-----------------------------------|--|---|
| QZT | X | X | X | XX | XX | XX | XXXX | X |
| Pitch(mm) A=1.27 B=1.778 C=2.00 D=2.54 | Dip spring 0= No 1=1.27mm 2=2.54mm 3=7.62mm 4=10.16mm 5=15.24mm | Angel Options D=180° R=90° S=SMT I1=IC-180度 I2=IC-90度 I3=IC-SMT | No. of Positions XX positions | Pin plated T1=Tin 150u" T2=Tin 200u" G1=G/F G2=Gold 3u" G3=Gold 10u" G4=Gold 15u" G5=Gold 30u" | CLIP plated T1=Tin 150u" T2=Tin 200u" G1=G/F G2=Gold 3u" G3=Gold 10u" G4=Gold 15u" G5=Gold 30u" | Pin Length Options 0740=7.40mm | Specifications A=Public seat B=Female seat | |