

Technical Data

Material:

Pin(outer sleeve):Brass,machined CuZn38Pb2

Plating(outer sleeve):

Tin Plated:2μm/80μm"NI, 5μm/200μ"Sn

Gold Plated:2μm"/80μm"Ni, 0.8μ" gold

Insuiator:PPS UL94V-0

Electrical:

Current rating:1Amps/contact max.

Contact resistance:≤4mΩ/contact

Insuiation resistance:≥1000MΩ at V=100V

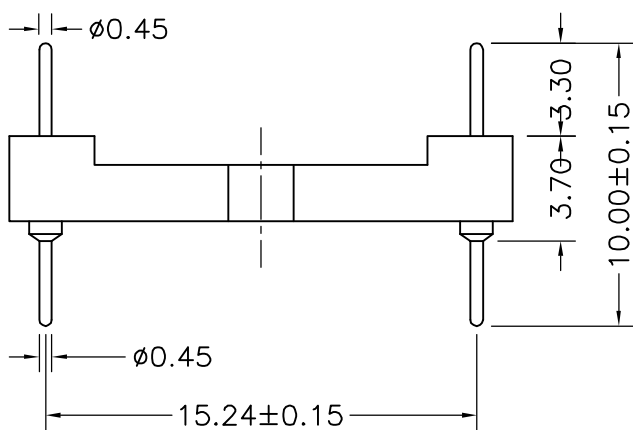
Dlelectric Withstanding Voltage:1000V AV Min

Operaling voltage:60VAC/DC

Mechanical:

Operaling temperature:-40° C to+105° C

Soldering temperature:+255° C



Serial number	No. of Positions	PART NO	A	B
7	20	QZTB5-I120XX1000A	18.1	16.002
8	24	QZTB5-I124XX1000A	21.7	19.558
9	28	QZTB5-I128XX1000A	25.2	23.114
10	40	QZTB5-I140XX1000A	35.8	33.782
11	42	QZTB5-I142XX1000A	37.7	35.56
12	48	QZTB5-I148XX1000A	43.1	40.894
13	52	QZTB5-I152XX1000A	46.7	44.45
14	56	QZTB5-I156XX1000A	50.2	48.006
15	64	QZTB5-I164XX1000A	57.3	55.118
14	68	QZTB5-I168XX1000A	60.9	48.674

**qztconn**  
启之泰

QZT	X	X	—	X	XX	XX	XXXX	X
Pitch (mm) A=1.27 B=1.778 C=2.00 D=2.54	Dip spcing 0= No 1=1.27mm 2=2.54mm 3=7.62mm 4=10.16mm 5=15.24mm	Angel Options D=180° R=90° S=SMT I1=IC-180度 I2=IC-90度 I3=IC-SMT	No. of Positions XX positions	Pin plated T1=Tin 150u" T2=Tin 200u" G1=G/F G2=Gold 3u" G3=Gold 10u" G4=Gold 15u" G5=Gold 30u"	Pin Length Options 1000=10.00mm	Specifications A=Public seat B=Female seat		