

Technical Data

Material:

Pin(outer sleeve):Brass,machined CuZn38Pb2

Plating(outer sleeve):

Tin Plated:2 μ m/80 μ m²NI, 5 μ m/200 μ m²Sn

Gold Plated:2 μ m²/80 μ m²NI, 0.8 μ m² gold

Plating(Contact):2 μ m/80 μ m²NI, gold or Tin plated

Insulator:PPS UL94V-0

Clip(Contact 6 Flnger):Beryllium copper,heat teated

Electrical:

Current rating:1Amps/contact max.

Contact resistance: \leq 4m Ω /contact

Insuation resistance: \geq 1000M Ω at V=100V

Operaing voitage:60VAC/DC

Mechanical:

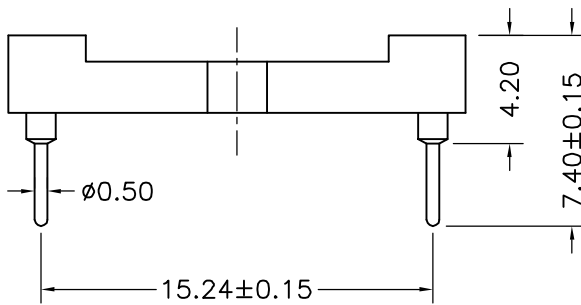
Average Insertion force with steel pin of \varnothing 0.432: $<$ 90g

Average withdrawal force with steel pin of \varnothing 0.432: $>$ 25g

Mechanical lige cycle:min 200

Operaling temperature:-40 $^{\circ}$ C to+105 $^{\circ}$ C

Soldering temperature:+255 $^{\circ}$ C



Serial number	No. of Positions	PART NO	A	B
7	20	QZTB5-I120XXXX0740B	18.1	16.002
8	24	QZTB5-I124XXXX0740B	21.7	19.558
9	28	QZTB5-I128XXXX0740B	25.2	23.114
10	40	QZTB5-I140XXXX0740B	35.8	33.782
11	42	QZTB5-I142XXXX0740B	37.7	35.56
12	48	QZTB5-I148XXXX0740B	43.1	40.894
13	52	QZTB5-I152XXXX0740B	46.7	44.45
14	56	QZTB5-I156XXXX0740B	50.2	48.006
15	64	QZTB5-I164XXXX0740B	57.3	55.118
14	68	QZTB5-I168XXXX0740B	60.9	48.674

qztconn
启之泰

QZT	X	X	X	XX	XX	XX	XXXX	X
Pitch(mm) A=1.27 B=1.778 C=2.00 D=2.54	Dip spcing 0= No 1=1.27mm 2=2.54mm 3=7.62mm 4=10.16mm 5=15.24mm	Angel Options D=180 $^{\circ}$ R=90 $^{\circ}$ S=SMT I1=IC-180度 I2=IC-90度 I3=IC-SMT	No. of Positions XX positions	Pin plated T1=Tin 150u" T2=Tin 200u" G1=G/F G2=Gold 3u" G3=Gold 10u" G4=Gold 15u" G5=Gold 30u"	CLIP plated T1=Tin 150u" T2=Tin 200u" G1=G/F G2=Gold 3u" G3=Gold 10u" G4=Gold 15u" G5=Gold 30u"	Pin Length Options 0740=7.40mm	Specifications A=Public seat B=Female seat	