

Technical Data

Material:

Pin(outer sleeve):Brass,machined CuZn38Pb2

Plating(outer sleeve):

Tin Plated:2 μ m/80 μ m"NI, 5 μ m/200 μ "Sn

Gold Plated:2 μ m"/80 μ m"Ni, 0.8 μ " gold

Plating(Contact):2 μ m/80 μ "NI, gold or Tin plated

Insulator:PPS UL94V-0

Clip(Contact 4 Flnger):Beryllium copper,heat teated

Electrical:

Current rating:3Amps/contact max.

Contact resistance: \leq 4m Ω /contact

Insulation resistance: \geq 1000M Ω at V=100V

Operaing voltage:60VAC/DC

Mechanical:

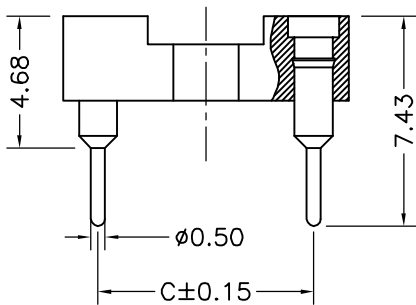
Average Insertion force with steel pin of \varnothing 0.432:<250g

Average withdrawal force with steel pin of \varnothing 0.432:>70g

Mechanical life cycle:min 200

Operaling temperature:-40 $^{\circ}$ C to+105 $^{\circ}$ C

Soldering temperature:+255 $^{\circ}$ C



Serial number	No. of Positions	PART NO	A	B	C	D
1	6	QZTD3-I106XXXX0743B	7.62	5.08	7.62	10.10
2	8	QZTD3-I108XXXX0743B	10.16	7.62	7.62	10.10
3	10	QZTD3-I110XXXX0743B	12.7	10.16	7.62	10.10
4	12	QZTD3-I112XXXX0743B	15.24	12.7	7.62	10.10
5	14	QZTD3-I114XXXX0743B	17.78	15.24	7.62	10.10
6	16	QZTD3-I116XXXX0743B	20.32	17.78	7.62	10.10
7	18	QZTD3-I118XXXX0743B	22.86	20.32	7.62	10.10
8	20	QZTD3-I120XXXX0743B	25.4	22.86	7.62	10.10
9	22	QZTD3-I122XXXX0743B	27.94	25.4	7.62	10.10
10	24	QZTD3-I124XXXX0743B	30.48	27.94	7.62	10.10
11	28	QZTD3-I128XXXX0743B	35.56	33.02	7.62	10.10

qztconn
启之泰

QZT	X	X	X	XX	XX	XX	XXXX	X
Pitch(mm) A=1.27 B=1.778 C=2.00 D=2.54	Dip spring 0= No 1=1.27mm 2=2.54mm 3=7.62mm 4=10.16mm 5=15.24mm	Angel Options D=180 $^{\circ}$ R=90 $^{\circ}$ S=SMT I1=IC-180度 I2=IC-90度 I3=IC-SMT	No. of Positions XX positions	Pin plated T1=Tin 150u" T2=Tin 200u" G1=G/F G2=Gold 3u" G3=Gold 10u" G4=Gold 15u" G5=Gold 30u"	CLIP plated T1=Tin 150u" T2=Tin 200u" G1=G/F G2=Gold 3u" G3=Gold 10u" G4=Gold 15u" G5=Gold 30u"	Pin Length Options 0743=7.43mm	Specifications A=Public seat B=Female seat	