

REVISION DATA		
REV	DESCRIPTION	DATE
A0	NEW DRAWING	16-5-3

Technical Data

Material:

Pin(outer sleeve): Brass, machined CuZn38Pb2

Pin(outer sleeve): Brass, machined CuZn38Pb2

Plating(outer sleeve):

Tin Plated: 2 μ m/80 μ m² Ni, 5 μ m/200 μ Sn

Gold Plated: 2 μ m²/80 μ m² Ni, 0.8 μ gold

Plating(Contact): 2 μ m/80 μ Ni, gold or Tin plated

Insulator: PPS UL94V-0

Clip(Contact 6 Flinger): Beryllium copper, heat treated

Electrical:

Current rating: Amps/contact max.

Contact resistance: $\leq 4m\Omega$ /contact

Insulation resistance: $\geq 1000M\Omega$ at V=100V

Operating voltage: 60VAC/DC

Mechanical:

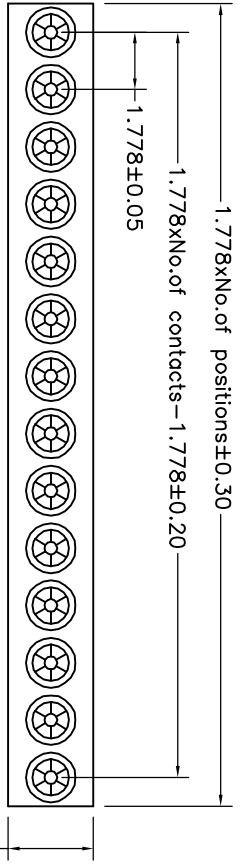
Average Insertion force with steel pin of $\phi 0.432$: $< 90g$

Average withdrawal force with steel pin of $\phi 0.432$: $> 25g$

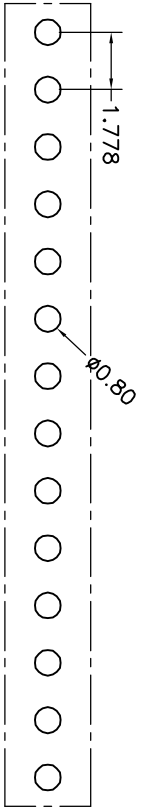
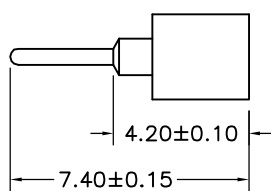
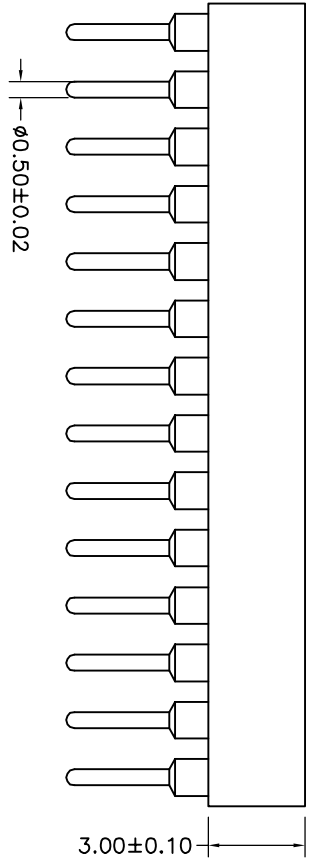
Mechanical life cycle: min 200

Operating temperature: $-40^{\circ}C$ to $+105^{\circ}C$

Soldering temperature: $+255^{\circ}C$



2.65 ± 0.10



P. C. B LAYOUT

QZT	X	X	-	X	XX	XX	XX	XXXX	X
Pitch(mm)	Insulator Type code								
A=1.27	1=Single row								
B=1.778	2=Double row								
C=2.00	3=Three row								
D=2.54									
Angel Options	Angel Options								
D=180°	R=90°								
S=50°	I=IC								
No. of Positions	XX positions								
Pin plated	Pin plated								
T1=Tin 150u"	T2=Tin 200u"								
G1=6/F	G2=gold 3u"								
G3=gold 10u"	G4=gold 15u"								
G5=gold 30u"	G5=gold 30u"								
CLIP plated	CLIP plated								
T1=Tin 150u"	T2=Tin 200u"								
G1=6/F	G2=gold 3u"								
G3=gold 10u"	G4=gold 15u"								
G5=gold 30u"	G5=gold 30u"								
Pin Length Options	Pin Length Options								
0740=7.40mm									
Specifications	Specifications								
A=Public seat	B=Female seat								

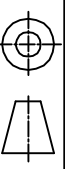
qztconn 东莞市启之泰电子科技有限公司

启之泰

TOLERANCE

X, XXX	±0.05
X, XX	±0.15
X, X	±0.20
X, X	±0.30
ANGLE	±5.0°

PROJECTION



DATE: 2016-5-3

DRAWN: TANG-S-G

CHECKED:

APPROVED:

TITLE:

Single row socket connector
1.778mm L=7.40mm

PART NO: QZTB1-DXXXXX0740B

DRAWING NO: 2016050307

REV: A0	UNIT: mm	SCALE: FULL	SIZE: A4
---------	----------	-------------	----------