

2

3

4

5

6

7

REVISION DATA		
REV	DESCRIPTION	DATE
A0	NEW DRAWING	16-4-19

Technical Data

Material:

Pin(outer sleeve):Brass, machined CuZn38Pb2

Plating(outer sleeve):

Tin Plated:2µm/80µm"Ni, 5µm/200µ"Sn

Gold Plated:2µm"/80µm"Ni, 0.8µ" gold

Plating(Contact ):2µm/80µ"Ni, gold or Tin plated

Insulator:PPS UL94V-0

ClIp(Contact 3 Flinger):Beryllium copper, heat teated

Mating pin□:0.38mm/0.50mm

Electrical:

Current rating:1amps/contact max.

Contact resistance:Max 20mΩ

Dielectric strength:Min 500V RMS

Operating voltage:60VAC/DC

Mechanical:

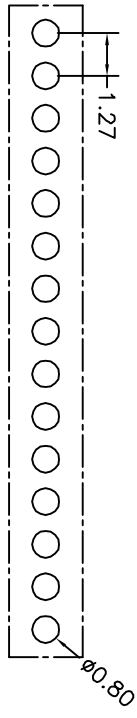
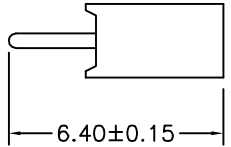
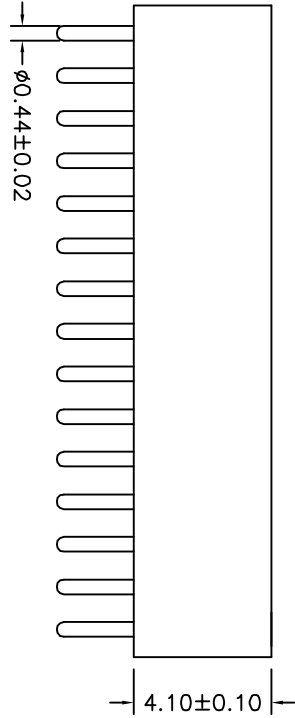
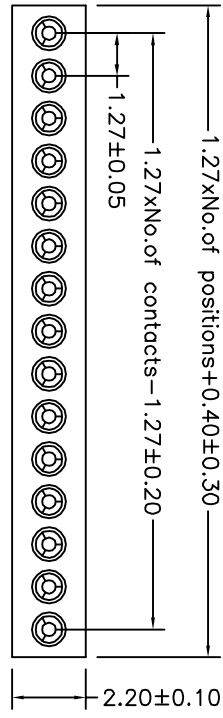
-Insertion:0.5N typ

-Withdrawal:0.2N typ

Mechanical life:min 500 cycle

Operating temperature:-40° C to+105° C

Soldering temperature:+255° C



P. C. B LAYOUT

QZT	X	X	-	X	XX	XX	XX	XXXX	X
-----	---	---	---	---	----	----	----	------	---

Pitch(mm)	Insulator Type code
A=1.27	1=Single row
B=1.778	2=Double row
C=2.00	3=Three row
D=2.54	

Angel Options
D=180°
R=90°
S=SMF
I=IC

No. of Positions
XX positions

Pin plated
T1=Tin 150µ"
T2=Tin 200µ"
G1=6/F
G2=gold 3µ"
G3=gold 10µ"
G4=gold 15µ"
G5=gold 30µ"

ClIp plated
T1=Tin 150µ"
T2=Tin 200µ"
G1=6/F
G2=gold 3µ"
G3=gold 10µ"
G4=gold 15µ"
G5=gold 30µ"

Pin Length Options
0640-6.40mm

Specifications
A=Public seat
B=Female seat

**aztconn** 东莞市启之泰电子科技有限公司

TOLERAVCE	PROJECTION	TITLE:
X,XXX ±0.05		Single row socket connector
X,XX ±0.15		1.27xH4, 10mm 1-6, 40mm
X, X ±0.20	DRAWN: TANG-S-G	PART NO: QZTA1-DXXXXXX0640B
ANGLE ±0.30	CHECKED:	DRAWING NO: 2016041903
±5.0°	APPROVED:	REV: A0 UNIT: mm SCALE: 1:1 SIZE: A4

A

B

C

D

E

A

C

D

E

1

2

3

4

5

6

7