

2

3

4

5

6

7

REVISION DATA		
REV	DESCRIPTION	DATE
A0	NEW DRAWING	16-4-19

Technical Data

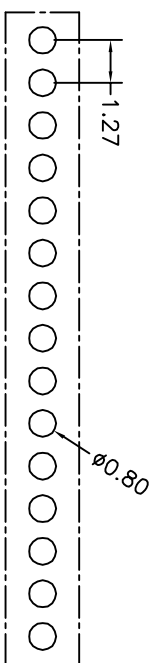
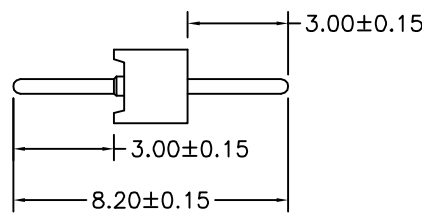
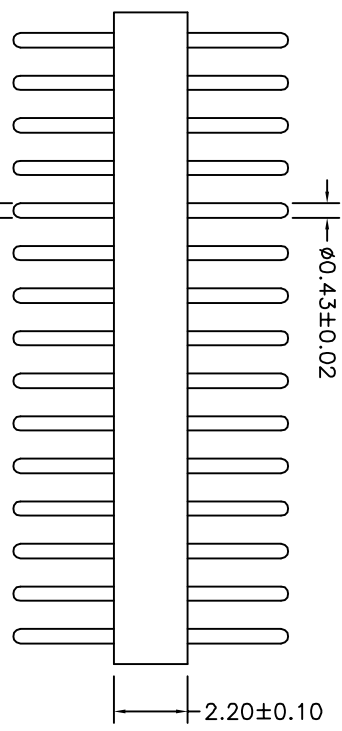
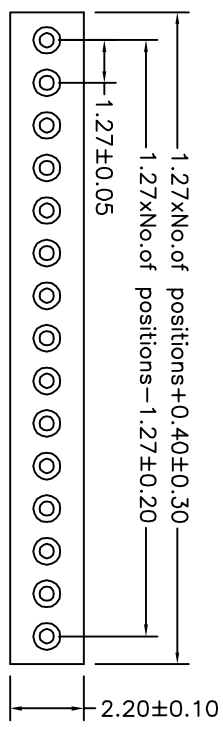
Material: Pin(outer sleeve): Brass, machined CuZn38Pb2
 Plating(outer sleeve):
 Tin Plated: 2μm/80μm Ni, 5μm/200μ Sn
 Gold Plated: 2μm/80μm Ni, 0.8μ gold
 Insuiator: PPS UL94V-0
 Mating pin∅: 0.43mm

Electrical:

Current rating: 1Amps/contact max.
 Contact resistance: ≤ 4mΩ/contact
 Insuiation resistance: ≥ 1000MΩ at V=100V
 Operating voltage: 60VAC/DC

Mechanical:

Mechanical life: min 500 cycle
 Operating temperature: -40 ° C to +105 ° C
 Soldering temperature: +255 ° C



P. C. B LAYOUT

QZT	X	X	-	X	XX	XX	XXXX	X
Pitch(mm)	Insulator Type code							
A=1.27	1=Single row							
B=1.778	2=Double row							
C=2.00	3=Three row							
D=2.54								
Angel Options	D=180°							
R=90°	S=90°							
S=50°	I=IC							
No. of Positions	XX positions							
Pin plated	T1=Tin 150μ"							
T2=Tin 200μ"	G1=6/F							
G2=Gold 3μ"	G3=Gold 10μ"							
G4=Gold 15μ"	G5=Gold 30μ"							
Pin Length Options	0820=8-20mm							
Specifications	A=Public seat							
B=Female seat								

uztconn 东莞市启之泰电子科技有限公司

TOLERAVCE	PROJECTION	TITLE:
X. XXX ±0.05	DATE: 2016-4-19	Single row socket connector
X. XX ±0.15	DRAWN: TANG-S-G	1.27mm L=8-20mm
X. X ±0.20	CHECKED:	PART NO: QZTA1-DXXXX0820A
X. ±0.30	APPROVED:	DRAWING NO: 2016041901
ANGLE ±5.0°		REV: A0 UNIT: mm SCALE: 1:1 SIZE: A4

A

2

3

4

5

6

7

A