

REVISION DATA		
REV	DESCRIPTION	DATE
A0	NEW DRAWING	16-4-20

Technical Data

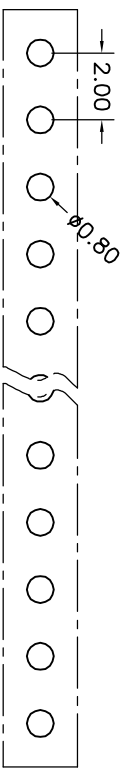
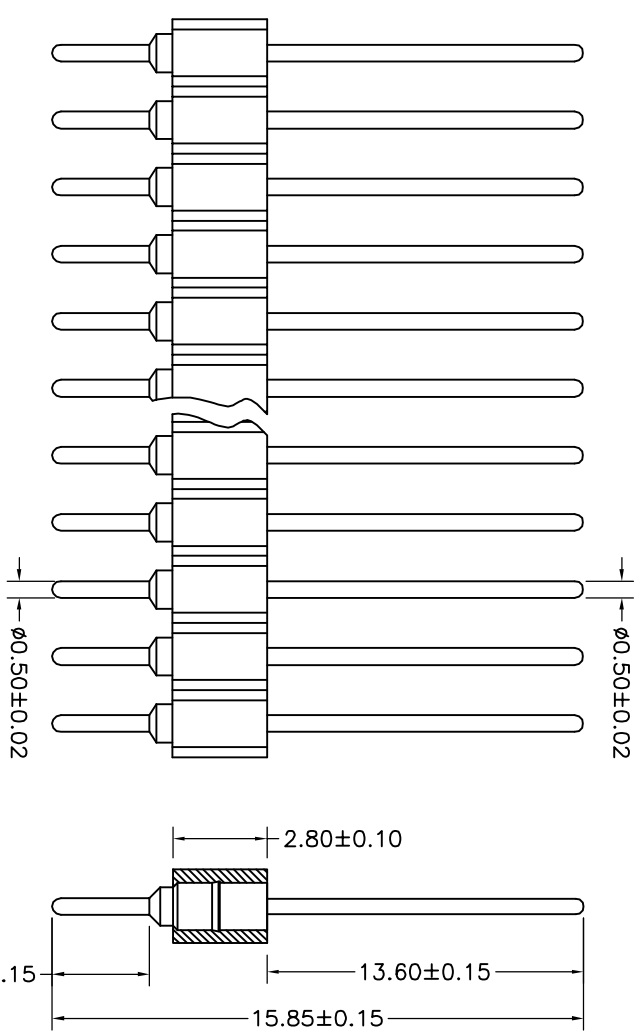
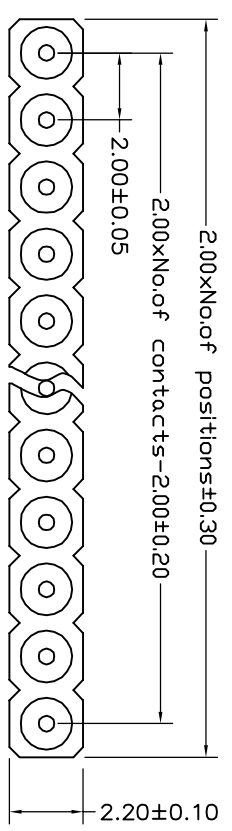
Material: Pin(outer sleeve): Brass, machined CuZn38Pb2
 Plating(outer sleeve):
 Tin Plated: 2μm/80μm Ni, 5μm/200μ Sn
 Gold Plated: 2μm/80μm Ni, 0.8μ gold
 Insulator: PPS UL94V-0
 Mating pin: 0.47/0.50mm

Electrical:

Current rating: 3Amps/contact max.
 Contact resistance: ≤ 4mΩ/contact
 Insulation resistance: ≥ 1000MΩ at V=100V
 Operating voltage: 60VAC/DC

Mechanical:

Mechanical life: min 500 cycle
 Operating temperature: -40 ° C to +105 ° C
 Soldering temperature: +255 ° C



P.C.B LAYOUT

QZT	X	X	-	X	XX	XX	XXXX	X
Pitch(mm)	A=1.27	B=1.778	C=2.00	D=2.54	Insulator Type code	1=Single row	2=Double row	3=Three row
Angel Options	D=180°	R=90°	S=SMT	I=IC	No. of Positions	XX positions	Pin plated	T1=Thin 150μ T2=Thin 200μ G1=6μ/F G2=6old 3μ G3=6old 10μ G4=6old 15μ G5=6old 30μ
Specifications	A=Public seat	B=Female seat						

QZTconn 启之泰 东莞市启之泰电子科技有限公司

TOLERAVCE	PROJECTION	TITLE:
X.XXX ±0.05	DATE: 2016-4-20	Single row socket connector
X.XX ±0.15	DRAWN: TANG-S-G	2.00mm L=20.0mm
X.X ±0.20	CHECKED:	PART NO: QZTC1-DXXXX2000A
ANGLE ±0.30	APPROVED:	DRAWING NO: 2016042005
		REV: A0 UNIT: mm SCALE: FULL SIZE: A4